

In your Gut a War is ongoing.

Immune Cells

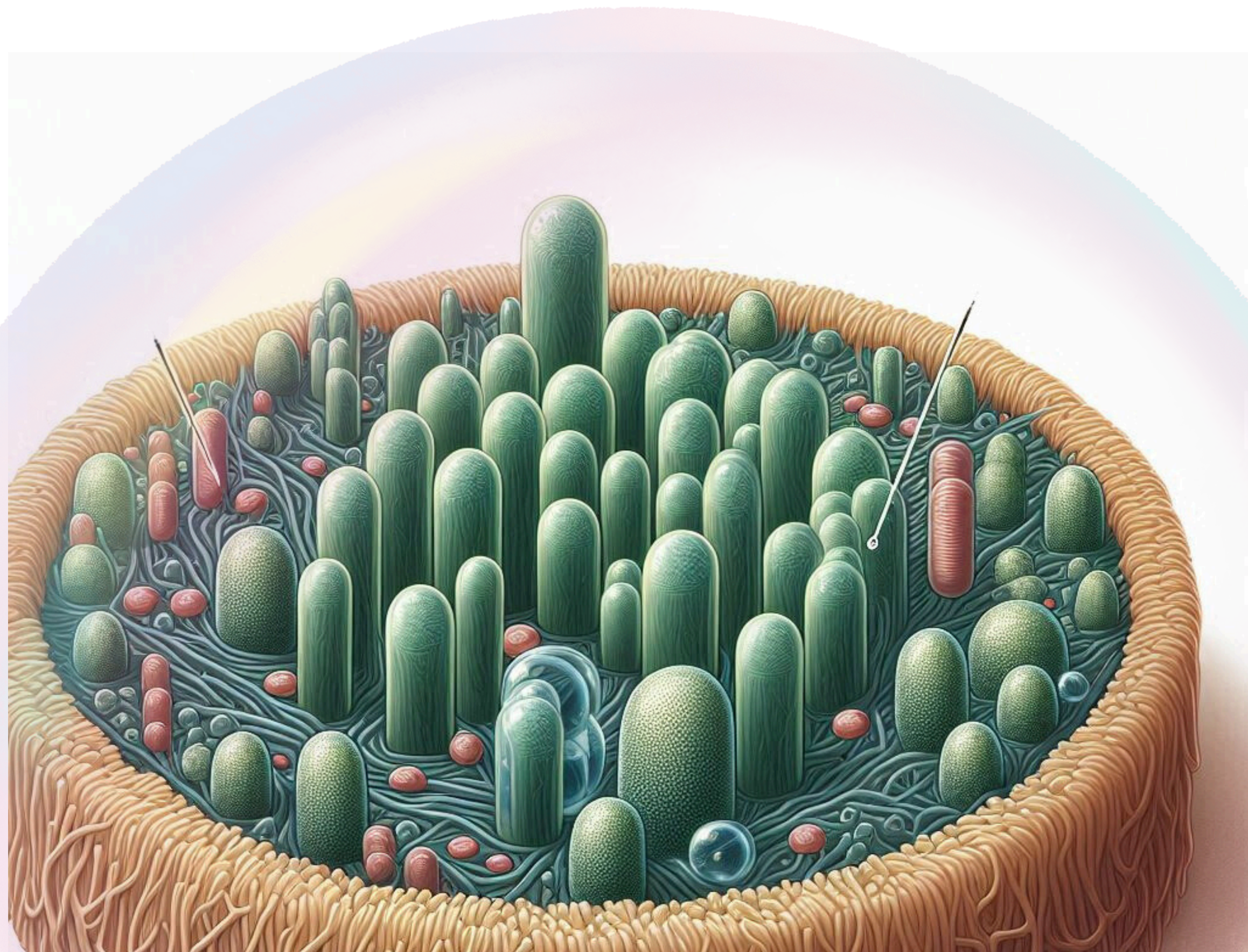
**The Biofilm Community
(Extra Cellular Matrix)**

**A Community that is opened as
the microorganism come out to
eat and feed.**

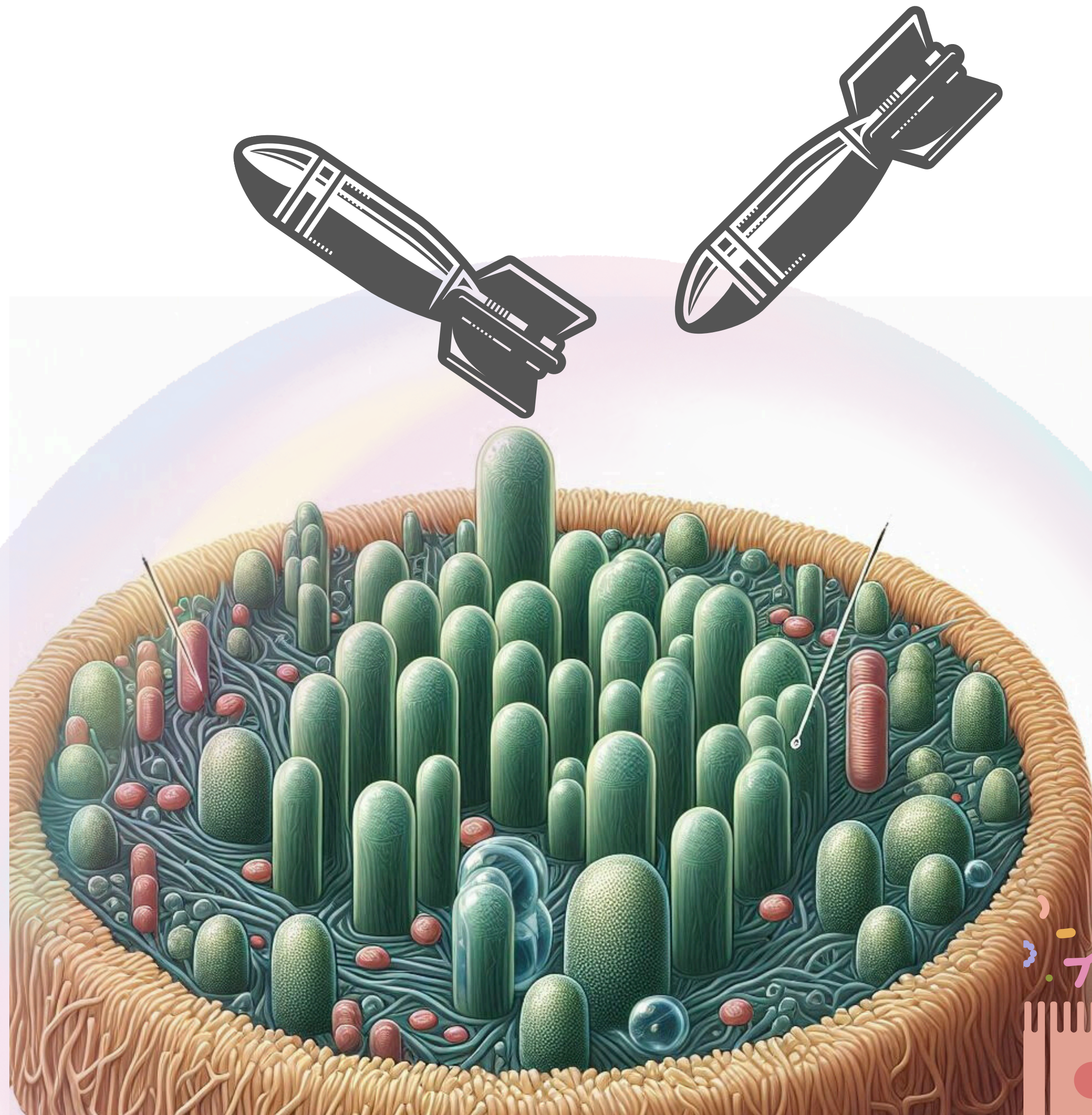
**They seek glucose (monosaccharides)
for nourishment and incorporation into
the LPS structure.**

Conceptual Framework of Biofilm: The Protective Structure Built to Shield Bacteria.

A biofilm, including a dome-shaped extracellular matrix, is constructed by bacteria to shield themselves from the immune system and antibiotics.

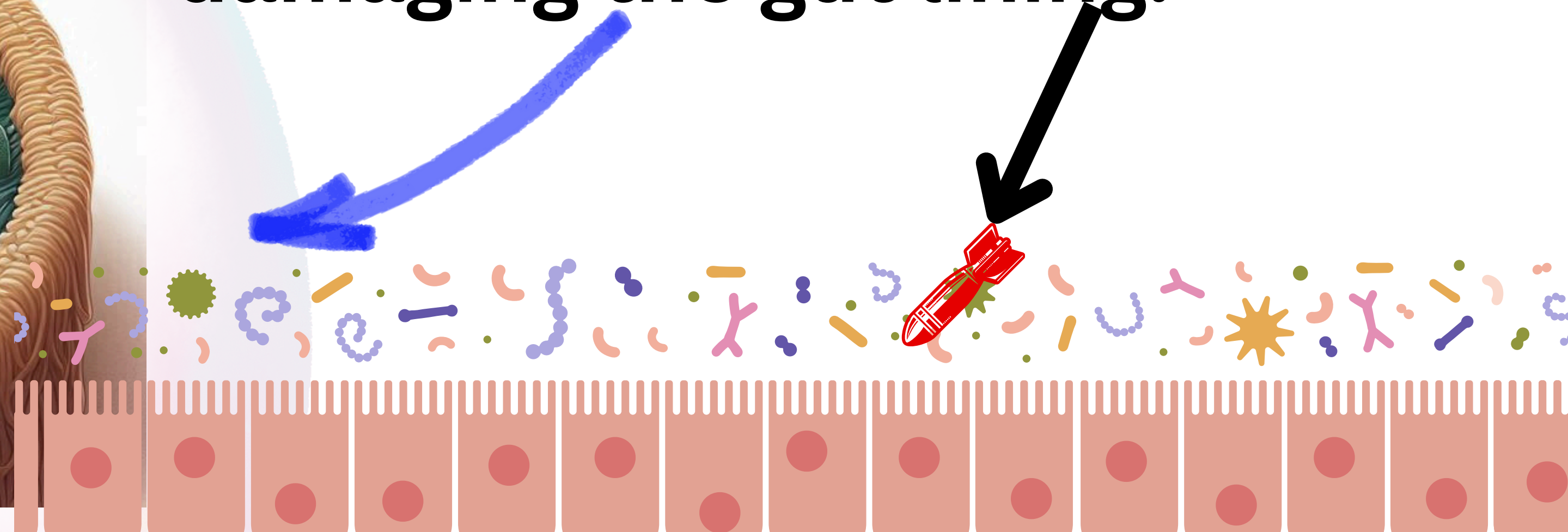


Conceptual Framework of Biofilm: The Protective Structure Built to Shield Bacteria.



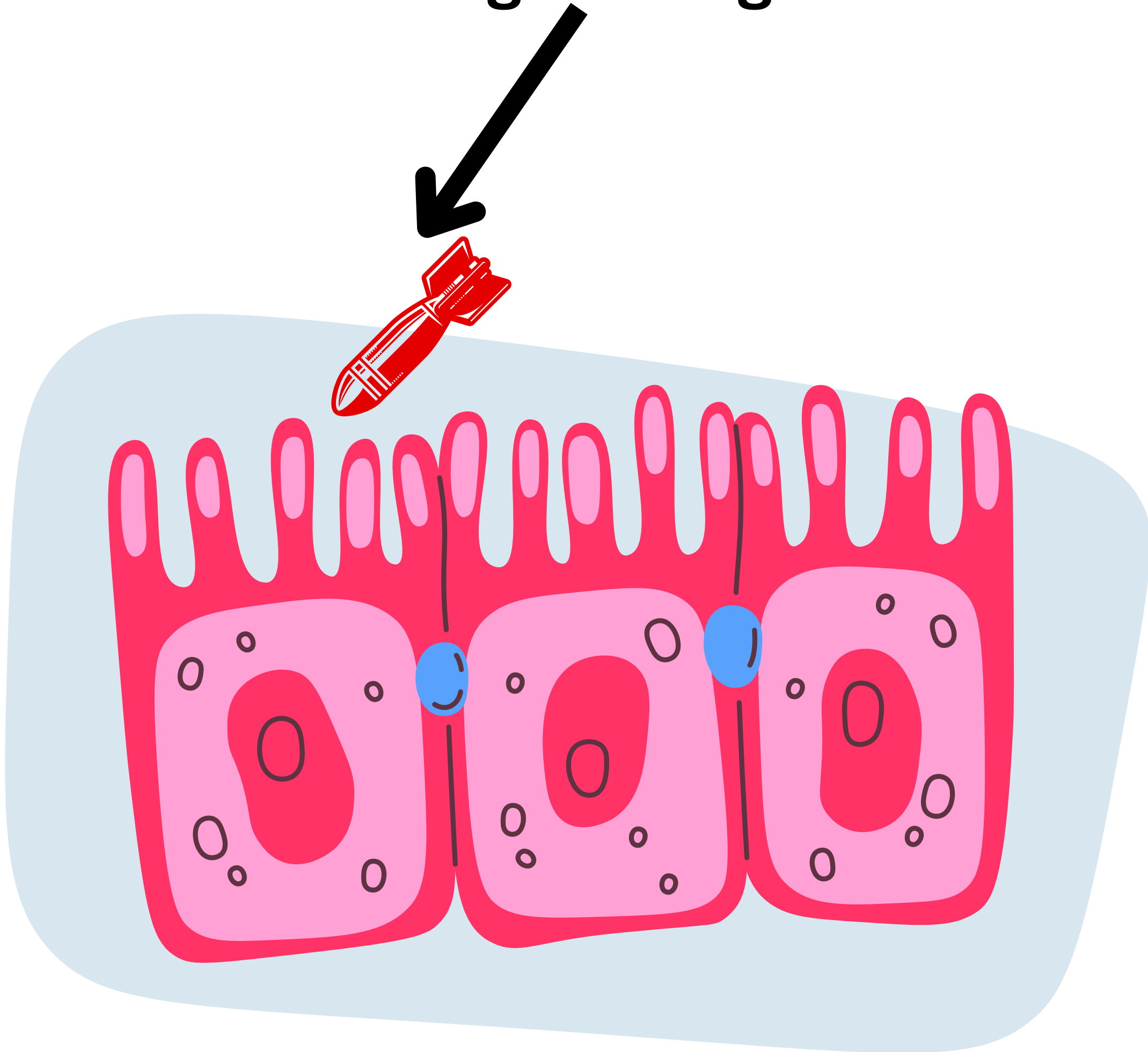
Even the antibiotics and immune systems' payload will not be effective against these LPS structures.

The payload will bounce back and then fall into the gut wall damaging the gut lining.



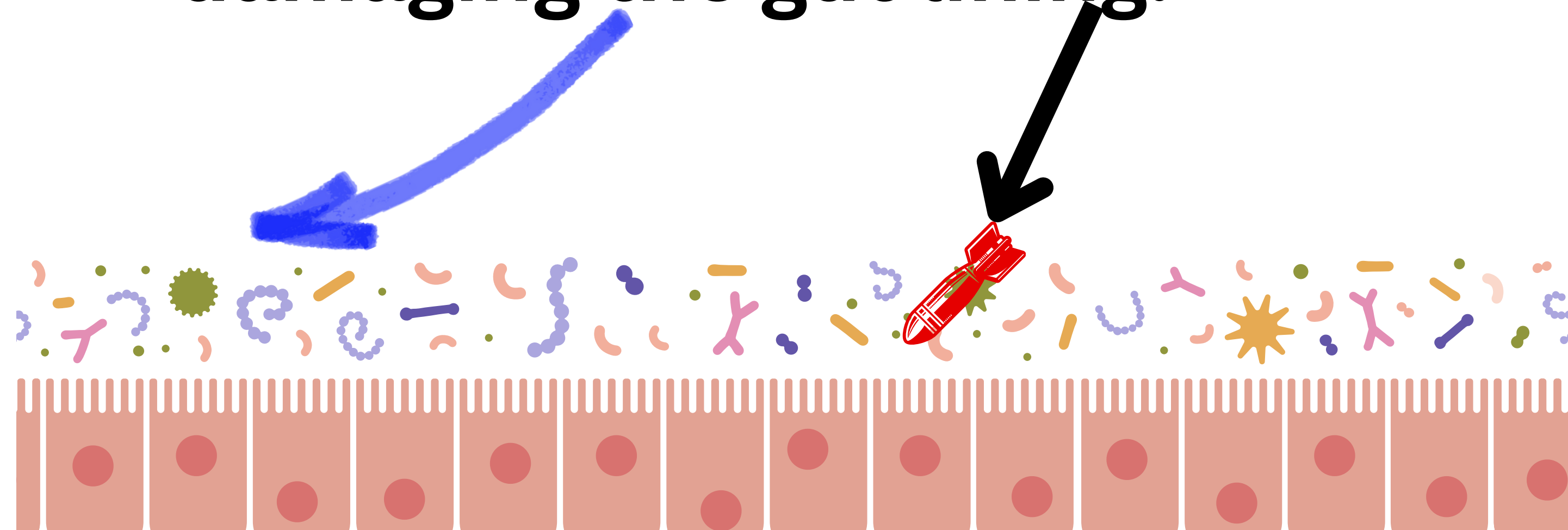
Conceptual Framework of Biofilm: The Protective Structure Built to Shield Bacteria.

An attack on LPS by antibiotics or immune system can be an attach on the gut lining.



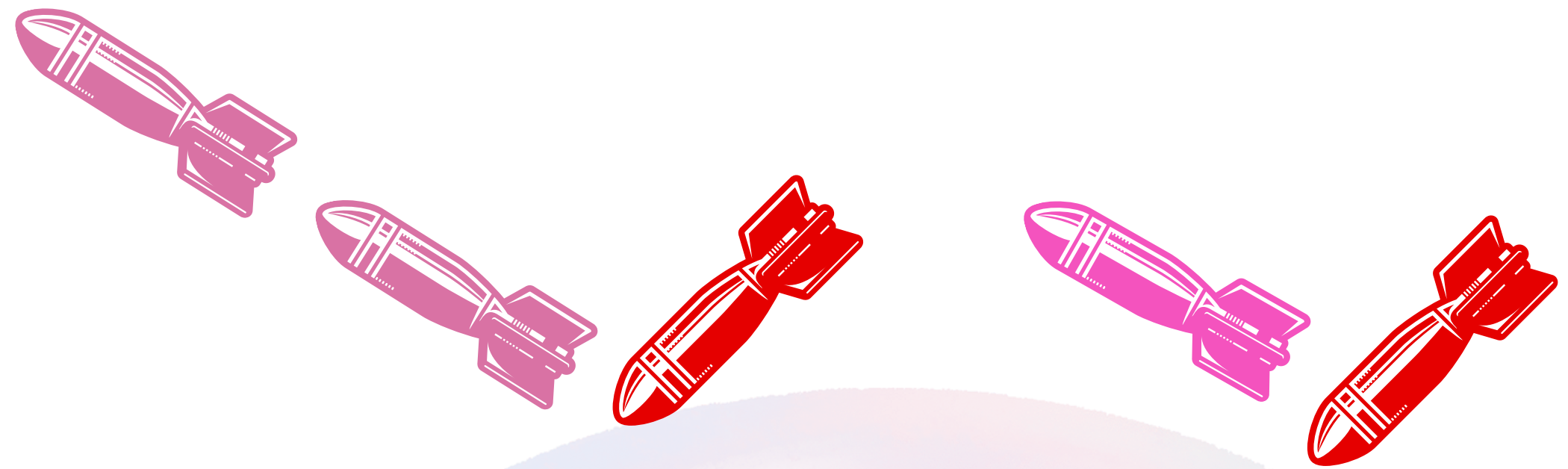
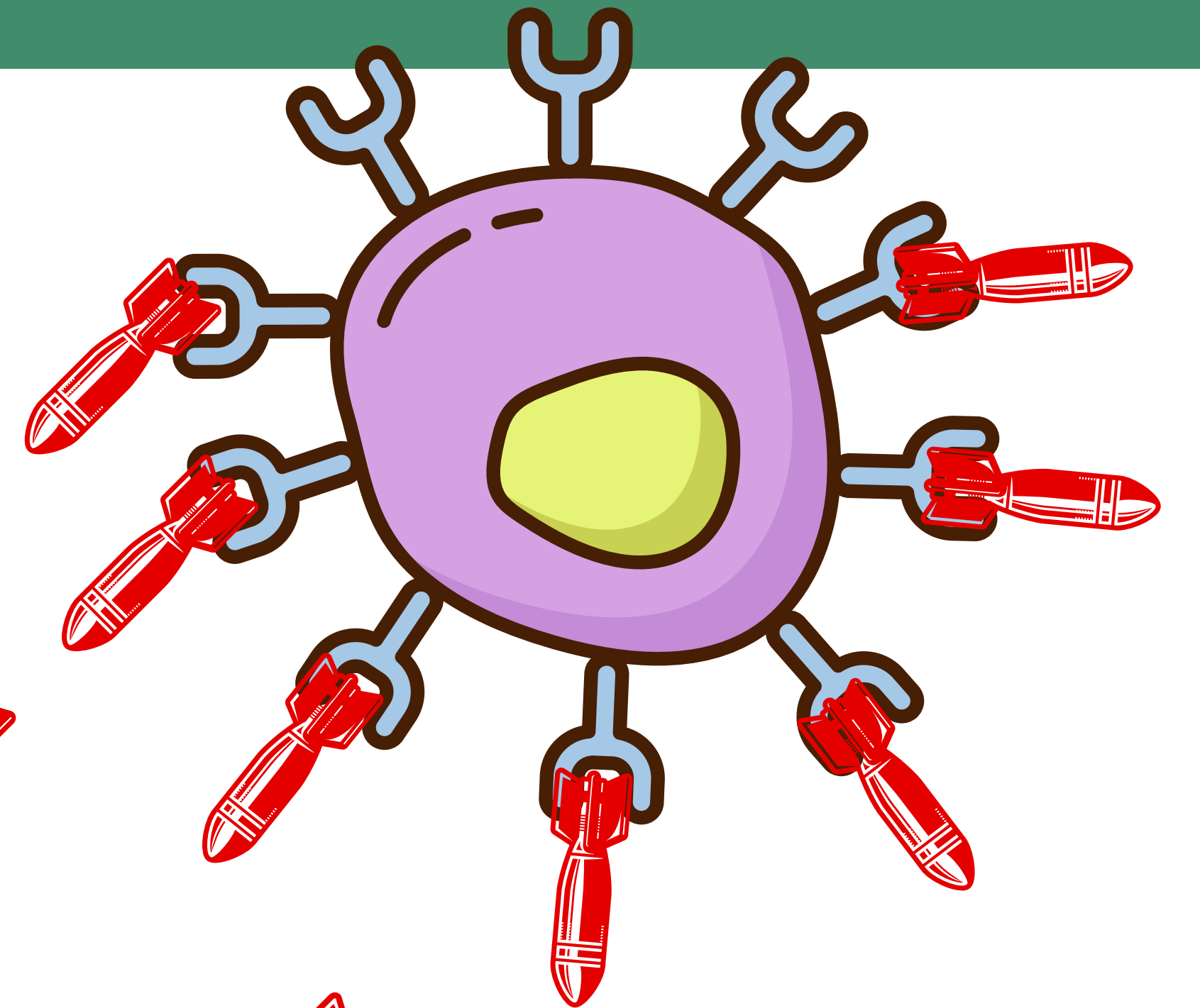
Even the antibiotics and immune systems' payload will not be effective against these LPS structures.

The payload will bounce back and then fall into the gut wall damaging the gut lining.



Conceptual Framework of Biofilm: The Protective Structure Built to Shield Bacteria.

The multiple attacks from the immune system are just a waste of time again these LPS housing.



LPS is the IRON DOME

Ha ha ha: They is wasting his time and energies to get at us!

